

The Spatial Transformation of Fishing Village Bagan Deli Belawan Medan In Indonesia

B O Y Marpaung¹, Dwira Nirfalini Aulia², M Nawawiy Loebis³,
Adhe Maulidina R Harahap⁴

¹(Department of Architecture/ Faculty of Engineering, Universitas Sumatera Utara Medan Indonesia)

²⁻⁴(Department of Architecture/ Faculty of Engineering, Universitas Sumatera Utara Medan Indonesia)

Corresponding author: B O Y Marpaung

ABSTRACT : Population growth in a settlement as the year progresses. Increasing community needs for housing make this an important matter, but to get a place to live, people constrained by the economy, this is one factor forming the unplanned settlements in the coastal areas. Fishing Village Belawan Medan is close to the sea, most of the residents of Fishing Village Belawan Medan are fishermen who make their homes from their home site as a place to earn a living. Various factors including the culture of the local community determined the formation of a settlement. The prevailing norms of growing based on increasing time and demands for life. The research aims to identify norms understood by the Deli Malay community in shaping the pattern of space, spatial structure, and transformation in settlements in the Fishing Village Bagan Deli Belawan Medan. The research uses qualitative methods that take data from interviews with residents to find out the norms applied by the Deli Malay community, spatial planning and spatial transformation in the Belawan Medan Fisheries Village. This study found that the relevant norms in finding residential houses in the Fishing Village Belawan Medan influenced the spatial transformation in settlements in the Fisherman Village of Belawan Medan.

KEYWORDS: Malay norm, structure, spatial, transformation

I. INTRODUCTION

Population growth in a settlement as the year progresses. Increasing community needs for housing in the settlements make this an important matter, but to get a place to live, people constrained by the economy, this is one factor forming the unplanned settlements that develop in the coastal areas. People build houses in the coastal area because they are close to the livelihoods of their residents. Social interaction impacts the balanced community life. A balanced community life in urban areas can reveal the complexity of urban sustainability. The complexity of urban sustainability supported by an emphasis on cultural aspects, social norms, and network systems in settlements. Space in settlements realized by the existence of social interaction [1]. The realization process can take place both and. The existence of interaction in a community in realizing space in the settlement illustrates that it balances the life of the community. The more complex the community in the settlements will form a place whose meaning is also complex.

Fishing Village Belawan Medan is close to the sea, most of the residents of Fishing Village Belawan are fishermen and traders who make their homes or land from their home site as a place to earn a living to meet the economic needs of the family. The community with a profession as a fisherman will determine where to live close to the living area. This has become a traditional thought of residents with a profession as fishermen. Various factors including the culture of the local community determined the formation of a settlement. However, the coastal area is the most appropriate place to live even though the physical condition of the soil and its nature is dangerous for residents. This pattern of thinking has become a tradition for generations of fishermen. The prevailing norms become a tradition of growing based on increasing time and demands for life.

Identification of the traditional space pattern structure in Kampung Bagan Deli Belawan Medan settlement on Bagan Deli Street, Medan Belawan Subdistrict, Bagan Deli Village examined related to the arrangement of traditional houses in the settlement with a high level of social relations in the settlement of Kampung Bagan Deli Belawan Medan. Residents in the settlements develop little by little to make their physical environment to accommodate various activities. The physical environment in the Kampung Bagan Deli Belawan Medan settlement connects with humans will influence and lead to a more specific life pattern.

According to Patterson, reveals that the social transformation results from events that proceed from the past to the present but not known by the times or the transformation process in the uncontrollable threshold resulting from the emphasis on events identified from time to time [2]. Based on this issue, it is important to study that the spatial transformation patterns that occur in the Kampung Bagan Deli Belawan Medan settlement based on community norms and the emphasis on the duration of time from year to year in forming space so that the traditional spatial pattern structures transformation in the settlement of Fishing Village Bagan Deli Belawan Medan. They got the process of transforming the traditional space pattern in Fishing Village Bagan Deli Belawan Medan settlement from the structure identification of the traditional pattern of settlements. So it can later use the results a basis for the government in settlement planning that grows and develops by including the traditions of the inhabitants of traditional settlements in coastal areas. As for the problem formulation that is the limit of the discussion in this study are: (1) How do the norms of the Deli Malay community from the space in the settlements of the Fishing Village Bagan Deli Belawan Medan? (2) How is the structure of space in the settlements of the Fishing Village Bagan Deli Belawan Medan? and (3) How is the spatial transformation in the settlements of the Fishing Village Bagan Deli Belawan Medan?

This study aims to identify the norms understood by the Deli Malay community in shaping the pattern of space in the Fishing Village Bagan Deli Belawan Medan. The key is to find space structures in the settlements of the Fishing Village Bagan Deli Belawan Medan. Examine out how the space transformation in the Fishing Village Bagan Deli Belawan Medan settlement.

II. METHODS

In finding the study, it must consider several criteria so that this study can get the data needed to achieve the research objectives. The method of determining the location determined (method-selective) choosing a location in Fishing Village Bagan Deli Belawan Medan. The criteria that must have to meet in finding the research are: (1) The research location is an unplanned-developed location, (2) Research locations are traditional settlements, (3) Research locations are traditional community settlements located close to the sea, most of the people work as fishermen and traders, and (4) The research establishment sites has undergone a process of change in various time periods.

This study uses a qualitative method that produces descriptive data based on the results of interviews and field observations. In determining variables, researchers refer to the theoretical basis and problems that have planned (Tabel 1).

Respondents in this study were residents who lived in settlements in Kampung Bagan Deli Belawan Medan which had the Deli Malay tribe. The data got by interviewing and direct observation of the research location to map the spatial structure of settlements in the Kampung Bagan Deli Belawan Medan.

Researchers conducted the interviews aimed at identifying norms understood by the Deli Malay community in shaping the pattern of space in the Kampung Bagan Deli Belawan Medan. We conducted observations of direct observations to find spatial structures and spatial transformation in settlements in the Kampung Bagan Deli Belawan Medan.

Table 1. Variable Determination Methods

Variable	Required Data
Several factors influence the norms of Deli Malay society in forming a space,; <ul style="list-style-type: none"> - Site selection - Construction of houses related to Deli Malay ethnicity and coastal environment - Circulation patterns related to the rules of Deli Malay ethnicity - Mosque as an Islamic identity which is the majority religion of Deli Malay ethnicity - Deli Malay ethnic custom ceremony Space structures in settlements include, <ul style="list-style-type: none"> - The shape of the settlement space - Characteristics of residential areas 	The norms that believed by the people in Kampung Bagan Deli Belawan Medan
Spatial structures in settlements include, <ul style="list-style-type: none"> - The shape of the settlement space - Characteristics of residential areas 	It can get data from the village leader about the spatial structure in Kampung Bagan Deli Belawan Medan

Spatial transformation in settlements includes, - Deli Malay community behavior	Assess the residential space transformation in various time periods
- Usage of land - Duration of time	Map of physical elements in settlements in Kampung Bagan Deli Belawan Medan.

III. RESULTS AND DISCUSSION

Kampung Bagan Deli Belawan Medan community believes in the norms they used to fulfill their daily needs. The house foundation owned by the community results from the parents or grandmothers inheritance who have already been in the Kampung Bagan Deli Belawan Medan. The norms related to determining the site of a residence in Kampung Bagan Deli Belawan Medan (Fig. 1) are:

- Norms that the chosen site of the house must be a site that does not endanger the occupants and does not disturb the surrounding environment which can cause disasters.
- Norms about the Deli Malay ethnic community have the principle of a high sense of togetherness among Deli Malay ethnic groups which trigger the spaces formed in the settlement.
- Norms about determining the house position consider the wind direction. Finding residents' homes in the Kampung Bagan Deli Belawan Medan settlement related to the mosque formation built by residents who first occupied the Kampung Bagan Deli Belawan Medan.

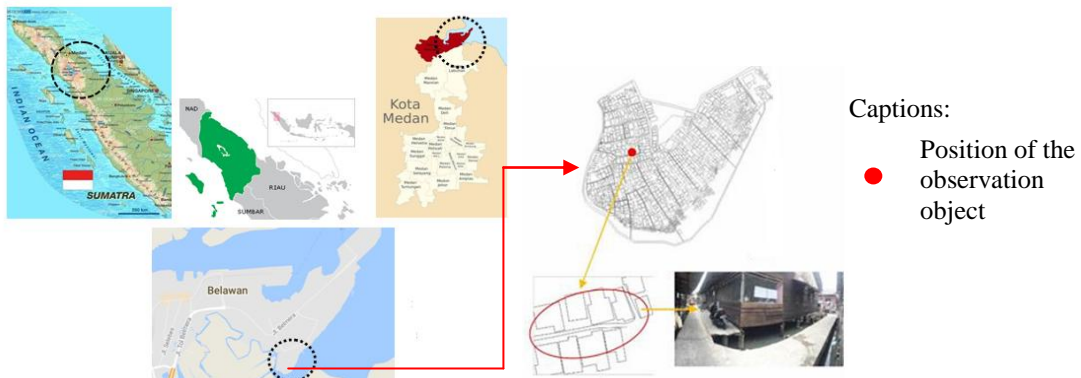


Fig. 1. Norms believed by the Kampung Bagan Deli Belawan Medan to related to the Site

The Deli Malay community upholds religious values, traditional values, and traditions. It can see the influence through how a settlement formed where the conditions are that there must be a house of worship/mosque (religious values) and a place of traditional ceremonies (Fig. 2). Society can see this in the structure of space in the settlements in Kampung Bagan Deli Belawan Medan, the building can function as a place of worship for Muslims.

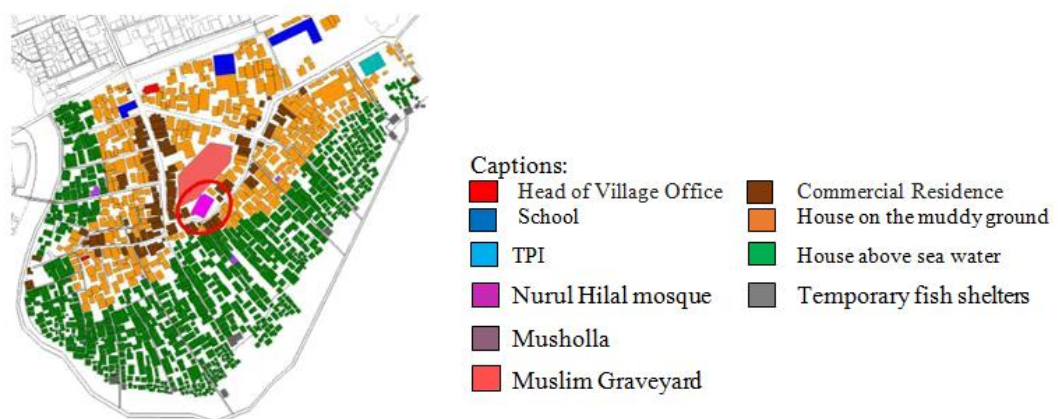


Fig. 2. Spatial Structure in Settlements of Kampung Bagan Deli Belawan Medan

Community houses that occupy the Kampung Bagan Deli Belawan Medan area have a house position facing the roadway and some other houses that have to enter a small alley. Clear management planning will guarantee the landscape preservation area created to prevent undesirable transformation, so the traditional

landscape application elements or activities to improve the aesthetic quality and ecology of the region become a principle concept that will plan new territory [3]. The Kampung Bagan Deli Belawan Medan community uses a small alley or alley residents can only pass that using a motorcycle with a size of 1.2 m in width (Fig. 3).

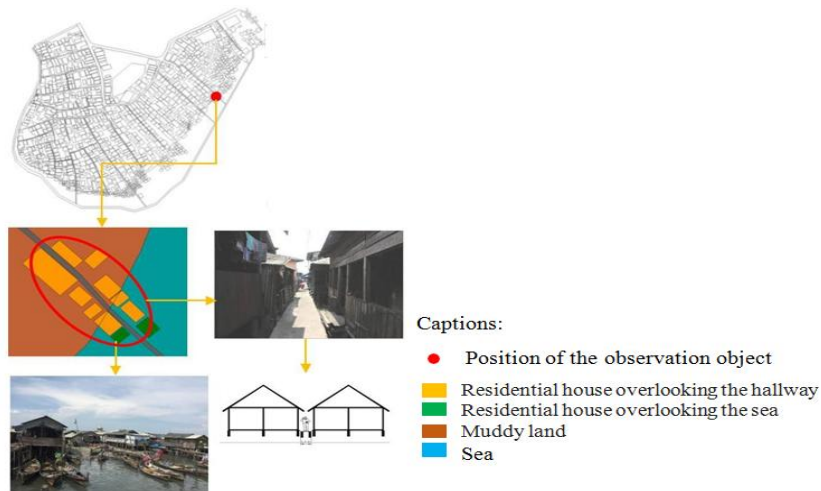


Fig. 3. Orientation conditions for houses in settlements of Kampung Bagan Deli Belawan Medan

The stage-shaped house used because it adapts to its environment is on the coast of the sea so a house in the form of a stage in Kampung Bagan Deli Belawan Medan that built until now there is still a lot of houses on stilts to avoid water entering the house in the event of the tide. A balanced community life in urban areas can reveal the complexity of the sustainability of settlements [1].

The emphasis must support the complexity of the sustainability of settlements on cultural aspects, social norms, and network systems in settlements. The community in the Kampung Bagan Deli Belawan Medan area to determine the site of his house using the rules or norms that apply to the community. These norms balance a settlement to the sustainability of the conditions of the settlement. The prevailing norms relate to the indigenous tribes of the Kampung Bagan Deli Belawan Medan community, namely Deli Malay ethnic. The emphasis of these community norms influences the form of land oriented towards roads or alleys in the Kampung Bagan Deli Belawan Medan and the boundaries of the outdoor living spaces in the Fishermen's Village (Fig. 4.).

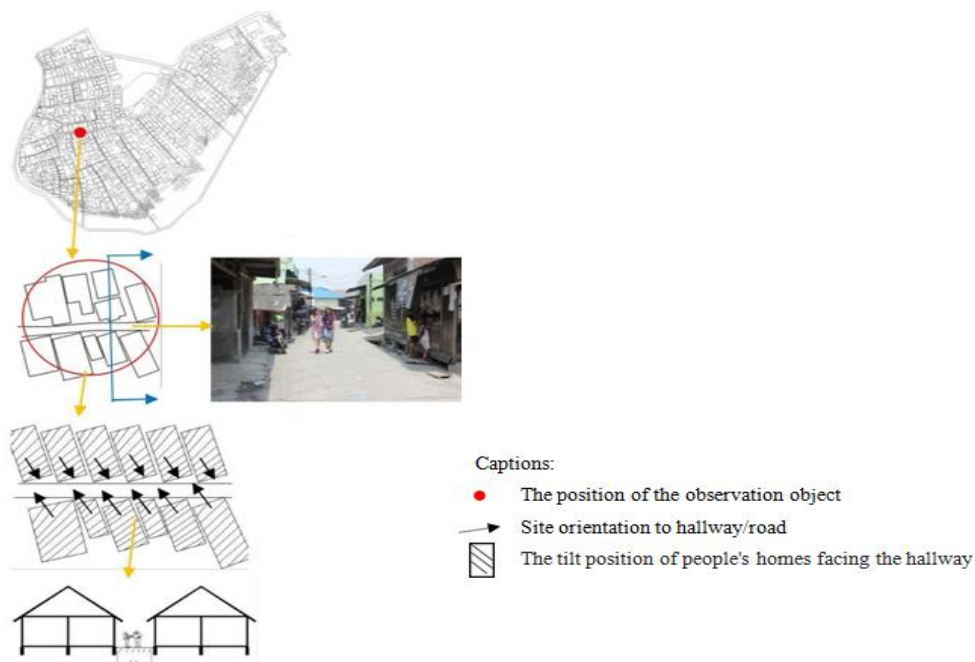


Fig. 4. Influence of Norms on Space in Kampung Bagan Deli Belawan Medan

Transformation of spatial patterns provides an understanding of the use of land for the community in settlements in Bagan Deli Belawan Fishing Village in Medan (Fig 5). Changes in the function of the space received encouragement by the community of Bagan Deli Belawan Fisherman Village in Medan with assistance from the Medan City Government.

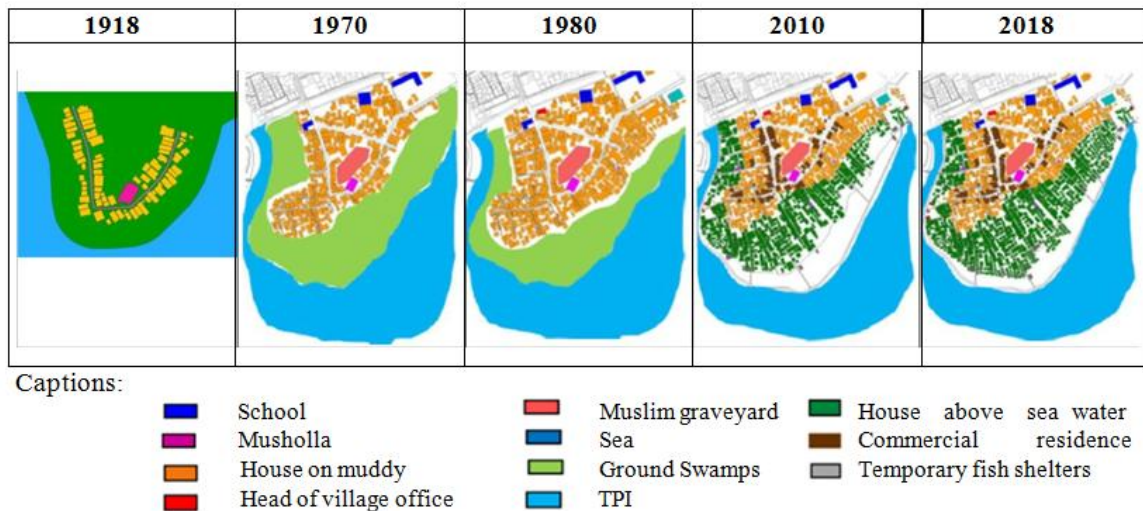


Fig. 5. Transformation of Land Use in the Settlement of Kampung Bagan Deli Belawan Medan

In 1918 the community during the Deli Sultanate made the Bagan Deli are a place for their stay in the sea. The existence of Nurul Hilal Mosque was first built in 1918 by the Deli Sultanate in its time. Deli Malay ethnic is identical with Islam so that the mosque became the benchmark for the beginning of the formation of spatial patterns during the Deli Sultanate. The composition of the houses that followed the direction in which they built the mosque and the way to follow the direction of the house site structure that followed the building of the mosque. Related norms in fulfillment to determine the site of the house during the Deli Sultanate in 1918 namely the existence of a place of worship/mosque triggered the formation of a settlement Malay Deli.

In 1970 the settlements in the Fishing Village Bagan Deli Belawan Medan were still a few and not to crowd. Communities that occupy Fishing Village Bagan Deli Belawan Medan has Deli Malay ethnicity. The population comes from the areas of Batubara, Percut, Serdang, and Tanjung Balai. The government sent them to Fishing Village Bagan Deli Belawan Medan because most of the residents were fishermen who were fishing in the Belawan Sea. They do not plan the pattern that realized to follow the flow of the river or sea around the settlement area. This influenced by the existence of Deli Malay ethnicity who live on the coast of the sea. Deli Malay community applies the norm or habit in determining the site by paying attention to the meaning of togetherness which closely proven by relatives of relatives who have settled in the Fishing Village Bagan Deli Belawan Medan triggering the formation of houses for the settlers who settled there.

In 1980, Fishing Village Bagan Deli Belawan Medan settlement developed over 10 years. In settlements, there is the construction of the headmen and TPI offices built by the government. In the growing residential growth settlements that occupy the area close to the coast of the Belawan Sea. So that people build their dwellings on the swampland on the coast of the Belawan Sea. Informing these spaces associated with spatial patterns that influenced by the norms or rules that underlie the formation of these spatial patterns. It relates this norm to Deli Malay ethnicity, most of its citizens have Deli Malays.

In 2010 the settlements of the Fishing Village Bagan Deli Belawan Medan has developed rapidly, so it increases the number of residents. It transformed increasing residential crowd in the area that was once a swamp, but into a pool of water due to tides of sea water, giving rise to stilts on the Belawan Seawater. The building of residents' houses that follow the flow of the river or sea has its own reasons by the people in the settlements in the Fishing Village Bagan Deli Belawan Medan. The norms that persist in determining the home site are the customs of the Deli Malay ethnic community occupying space to build a place to live always paying attention to the strong sense of togetherness among the Deli Malays ethnic who first lived in the Fishing Village Bagan Deli Belawan Medan.

In 2018 there are few changes in the area recently. We only find changes in some parts of the region that change the function of the space, such as the field that turned by the government into the public bathing. They carried the change out by the government because it was a means for the community of Fishing Village Bagan Deli Belawan Medan to fulfill their needs. Subsequently, the change occurred in the field built by the residents. The dominant change is the orientation of the spaces in the Fishing Village Bagan Deli Belawan

Medan area that oriented towards the main road so it does not consider the direction of the compass or the Qibla. This year, the part of the community has died so that condition will plan modern direction that implemented in forming a space with a logical and functional calculation of the building to the surrounding environment.

IV. CONCLUSION

The Kampung Bagan Deli Belawan Medan community in determining its home site applies the prevailing norms relating to Deli Malay ethnicity. In determining the home site of the community of Kampung Bagan Deli Belawan Medan. Relevant norms in determining the site of the house carried out as a form of Kampung Bagan Deli Belawan Medan in carrying out the norms about the right land that does not disturb the earth's veins, while the wrong ones will bring disaster to the inhabitants and related to norms about determining the physical property, soil and taste. The position of the Kampung Bagan Deli Belawan Medan community houses meet the norm about determining the position of the house considering the wind directions according to the norm that believed to be part of the community.

Most the Deli Malay ethnic community embraces Islam so that the existence of the Mosque has influenced the Deli Malay ethnic community in Kampung Bagan Deli Belawan Medan in forming space. The prevailing norms relate to Islam as in the construction of roads carried out by the community in the Kampung Bagan Deli Belawan Medan. The Deli Malay community highly upholds the values of religion, the values of their customs and traditions. We can see the influence through how a settlement formed where the conditions are that there must be a house of worship/mosque (religious value) and a place of traditional ceremonies. In fulfilling these related factors, the Deli Malay ethnic community carries traditional handlers or leaders who usually follow in the process of building the homes of the residents.

The fishermen came to Kampung Bagan Deli Belawan Medan to continue their work as fishermen so they lived in Kampung Bagan Deli Belawan Medan so they will near to their place to find fish, shrimp, shellfish, crabs, squid, and others. The marine coastal environment is the residence of residents who have livelihoods in the area to form a settlement. Settlements parallel along the river line will change by adjusting the soil conditions, green space, and cultural composition [4].

Norms have balanced a settlement against the sustainability of the conditions of the settlement. The prevailing norms relate to the indigenous tribes of the Kampung Bagan Deli Belawan Medan community, namely the Deli Malays. The emphasis of these community norms influences the form of land oriented towards roads or alleys in the Kampung Bagan Deli Belawan Medan and the boundaries of the outdoor living space in the Fishermen's Village. It relates this to The balanced community life in settlements can reveal the complexity of sustainability [5]. The emphasis must support the complexity of the sustainability of settlements on cultural aspects, social norms, and network systems in settlements. The people in the Kampung Bagan Deli Belawan Medan area to determine the site of his house using the rules or norms that apply to the community.

The transformation in the pattern of space in the Kampung Bagan Deli Belawan Medan settlement has occurred since the establishment of Kampung Bagan Deli by Deli Sultanate in 1918 until now 2018 has undergone many changes because the settlements occupied by the native Deli population and outsiders who come looking for jobs as fishermen so they build their houses in the Kampung Bagan Deli Belawan Medan area.

V. ACKNOWLEDGEMENTS

Research on The Spatial Transformation of Fishing Village Bagan Deli Belawan Medan in Indonesia continues to produce the new theory. The source of this research is Research Fund of DRPM Kemenristekdikti Scheme of Fundamental Research of College for Budget Year 2018 Number34/ UN5.2.3.1 / PPM / KP-DRPM / 2018.

REFERENCES

- [1]. Dalle, S. P., de Blois, S., Caballero, J., & Johns, T. (2006). Integrating analyses of local land-use regulations, cultural perceptions and land-use/land cover data for assessing the success of community-based conservation. *Forest Ecology and Management*, 222(1-3), 370-383.
- [2]. Patterson, Orlando. 2007. Review of: *The logics of history*, by William H. Sewell. *American Journal of Sociology* 112: 1287-90.
- [3]. Zigmunde, D. (2010, May). Preservation of Traditional Rural Landscape Identity as an Integrative Tool for New Housing Settlements in Latvia. In *International scientific conference proceedings of full papers-Landscape Legacy: Landscape Architecture and Planning between Art and Science*.
- [4]. Yodsurang, P., & Yasufumi, U. (2015). A Traditional Community in the Chao Phraya River Basin II: Influence of Water Circulation in the Traditional Living Culture according to the Settlement Pattern. *Asian Culture and History*, 8(1), 112.
- [5]. Long, H.L., Heilig, G.K., Li, X.B., Zhang, M., 2007b. Socio-economic development and land-use change: analysis of rural housing land transition in the Transect of the Yangtse River, China. *Land Use Policy* 24 (1), 141-153.