

## The Effect of Visitor's Comfort on the Success of City Park AS A Social Interaction Space (Case Study: Blang Padang Field, Banda Aceh)

Muhammad Haqqul Mulki<sup>1</sup>, B O Y Marpaung<sup>2</sup>, Hilma Tamiami Fachrudin<sup>3</sup>

<sup>1</sup>(Department of Architecture/ Faculty of Engineering, Universitas Sumatera Utara Medan Indonesia)

<sup>2-3</sup>(Department of Architecture/ Faculty of Engineering, Universitas Sumatera Utara Medan Indonesia)

Corresponding author: Muhammad Haqqul Mulki

**ABSTRACT:** This study aims to analyze the effect of visitor comfort on the success of the city park as a social interaction space in the Blang Padang City Park, Banda Aceh, taking into account the availability and quality of the facilities and infrastructure available in this park. The method used in this research is quantitative. Where, the primary data sources were obtained through field observations, documentation, and distributing questionnaires to tourists visiting the park with purposive sampling method. Meanwhile, secondary data were obtained from literature studies and institutions related to the object of research. The results obtained are that it is found whether or not there is an influence of visitor comfort on the success of the city park as a space for social interaction in the Blang Padang City Park, Banda Aceh. Then the results of the research can be used as knowledge and become input in improving the quality of the city park as a space for social interaction based on the views of visitors to the Blang Padang city park, Banda Aceh.

**Keywords** -Social interaction, Comfort, City, City park, Visitor, Space.

### I. INTRODUCTION

The city is an area with a high population density with very busy human activities in it and is also surrounded by densely populated buildings and housing, but without realizing a city does not only contain buildings and residential residents but the city also has space. green open space like a city park which is one of the needs of urban residents and acts as the lungs of the city. City parks are green open spaces that have the main function for beauty and space for social interaction [1].

A city park is an open land that has a function as a social and aesthetic space, besides that a city park also functions as a means of recreational activities, education or other activities at the city level. Urban parks are intended to serve residents of a city or part of a city area. This park can be shaped as an open space (green field), which is equipped with recreational and sports facilities, all of these facilities are open to the public. An urban park can create a sense of place, become a landmark, and become a community gathering point. In addition, city parks can also increase property values and become a driving force for development. City parks are an important component of a successful city development[2].

The high social activity of the urban community is expected for a city to have a city park that is equipped with all facilities and infrastructure that are comfortable for city park visitors so that city parks can play a good role as a space for social interaction for city people, but city parks are often found that are not appropriate. with the applicable provisions so that the city park does not provide a sense of comfort so that it will be quiet for visitors and the park does not function properly. According to Santosa et al. Facilities that are not maintained, garden pools that are no longer functioning, cleanliness that is not maintained, lack of seats, open spaces without trees that make visitors hot are the reasons visitors feel uncomfortable. To realize a comfortable city park as a space for social interaction, city parks have several comfort criteria, according to government regulation SNI 03-1733-2004, namely achieved by ease of achievement (accessibility), ease of communication (internal/external, direct or indirect), ease of activities (environmental infrastructure and facilities are available) [3]. Besides that, Siregar also stated that the criteria used to evaluate the level of comfort of the park as a city interaction space are vegetation that dominates, adequate facilities and infrastructure, cleanliness, and visual beauty [4].

The city of Banda Aceh, as the capital city of Aceh province, has several city parks. However, there is one city park that acts as a public space on the scale of a sub-district environmental park but is located in the city center, namely the Blang Padang field park which is located in the center of Banda Aceh and is also an icon of the city of Banda Aceh. Like public parks in general, as a space for social interaction, this park works as a place for playing and exercising, communicating, waiting or just looking for refreshment. In addition, this park is supported by facilities and infrastructure in the form of sports facilities, children's play areas, culinary areas, cleaning facilities, toilets, parking areas, places of worship and also surrounded by vegetation. The park can also be easily reached by visitors considering its strategic location and easy to reach because it is located in the center of Banda Aceh.

The high interest of visitors to carry out social activities at the Blang Padang Field city park, Banda Aceh, both from Banda Aceh residents and tourists from various regions, this park should already have a variety of comfortable facilities and infrastructure, but often there are still complaints from visitors about various shortcomings in this park. facilities and infrastructure available in this park, such as toilets that are not maintained, damaged garden chairs, cleanliness that is not maintained, sports facilities that are not maintained, destinations that are not functional, inadequate lighting at night and so on. [5].

These various problems are the background of the author to find out how the public perception of visitors to the Blang Padang Field city park in Banda Aceh, towards the comfort of the Blang Padang field city park, both its facilities and infrastructure and the vegetation of this city park so that it can support the social activities of the people of Banda Aceh.

## II. LITERATURE REVIEW

### 2.1 Infrastructure to Support Visitors' Comfort

Infrastructure facilities are everything that can be used for tools or media in achieving goals or objectives and everything that is the main support for the implementation of an activity. In general, infrastructure facilities can be interpreted the same as facilities which are the main support in an activity, then the infrastructure in an area must be adequate so that the continuity of its activities can run well, especially in city parks[6].

Several infrastructure facilities that support the convenience of the city park for visitors, facilities for supporting comfort include clean toilets, sports facilities, drinking water, seating, fast internet network, walking path, supporting facilities for playing activities, there is a lake or river. the existence of these infrastructure facilities can support activities in city parks and it is hoped that city parks can function as social spaces that are worthy of being visited by visitors both within the city and outside the city and provide a sense of comfort[7].

The feasibility of the infrastructure of a city park is also regulated in Indonesian government regulations in accordance with the standards and uses of the city park function, this standard becomes a reference for a city park, so that the completeness of infrastructure facilities can create a sense of comfort for city park visitors. City park facilities and infrastructure are regulated in the regulation of the minister of public works number: 05/PRT/M/2008 concerning the provision and utilization of green open space in urban areas[8].

### 2.2 The level of visitor comfort in supporting the park as a city open space

visitor is any person who comes to a country or other place of residence and usually for any purpose except to do work and do not receive wages. [9]. Characteristics of visitors in the socio-demographic category are divided into several groups, namely gender, age, and purpose of visiting [10].

Perception is a process that is captured by the five senses, namely the process that is received by individual stimuli through receptors (sensory organs). The senses are a liaison between the individual and the surrounding environmental conditions because individuals recognize the surrounding environment using their senses, perception can include receiving a stimulus, organizing, and receiving or interpreting a stimulus that is organized in a way that can influence behavior and the formation of attitudes [11]. factors that influence individual perceptions in creating a visitor's perception are the object being observed, the depth of observation of the object, personal factors determined by experience [12].

Some of the components that become material in measuring perceptions include the attractiveness and facilities of public spaces in the form of city parks. Where the completeness and condition of the facilities are the benchmarks for an area, it can be said to be good or very good so as to create an area that has an attraction for visitors[13]. As a public space in the form of a city park, it is necessary to pay attention to beauty, comfort, and security because these three things affect the level of pleasure or visitor perception [14].

Comfort is a state in which a person involved feels subjective well-being, as a reaction to environmental or environmental situations, Comfort is to build self-quality and is subjective to determine it, besides that comfort is also influenced by various factors from conditions such as physiological, psychological and physical, as well as reacting to the environment, Comfort can be achieved if the comfort factors are fulfilled, namely circulation, natural power or climate, noise, odors, security, cleanliness and beauty [15].

### 2.3 The influence of facilities and infrastructure on the comfort level of city park visitors as a space for social interaction

The comfort of visitors is a very important and very influential aspect for public open spaces such as city parks, which function for recreation and socialization, paying attention to the comfort of visitors is important because a city park can play a good role for urban facilities if the park can be a comfortable social interaction space and is visited by urban people many times and people feel at home to linger doing various activities in it [16].

Social interactions are dynamic relationships involving relationships between people, between groups, as well as between individuals and human groups [17]. In addition, social activities can be interpreted as activities that require the presence of other people. This activity can be in the form of casual conversation on the side of the road, face to face or activities for children playing in city parks. The high social activity of the city community so that it is expected that a city has a city park that is equipped with all facilities and infrastructure that are comfortable for city park visitors so that city parks can play a good role as a space for social interaction for the city community [18].

An understanding of the quality of the park as a space for public social interaction begins with an understanding of the aspects that shape the quality of the public space which includes: (1) aspects of needs, which include comfort, relaxation, passive involvement, and active involvement, (2) aspects rights, which include accessibility and ease of achievement, freedom of activity, various activities and place claims. (3) aspects of meaning (meanings), namely easy to recognize (legibility), relevance (relevance), individual relationships, group relationships, relationships with the wider community [19].

### III. METHODS

In order to complete research on the influence of comfort on the success of city parks as a space for social interaction in Blang Padang Padang Banda Aceh, the researchers used a quantitative approach. Quantitative research methods use numbers, starting from interpretation, data collection and the appearance of the results. [20] This study is evaluative by testing the extent to which visitor comfort affects the success of city parks as social interaction spaces in Blang Padang Padang Banda Aceh by collecting urban community opinions with questionnaires and field observations and then comparing them with appropriate standards of social interaction spaces.

In determining the number of samples in this study, the researcher will use a non-probability simplling technique with the type of accidental sampling, which is a representative selected based on the criteria set by the researcher. The condition is that visitors to the Blang Padang Padang field park in Banda Aceh must be at least 12 years old, male or female, sane and not crazy. As for how to determine the sampling method, the researcher assumes the total population is the entire community of the Baiturrahman sub-district which is the research location, which is recorded as much as 52,486 and the desired error rate is 10%, then the number of samples used in this study are.

$$n = \frac{N}{1 + Ne.^2}$$

With:

n = sample size

N = population size

E = margin of error (0.1)

$$n = \frac{52.486}{1 + 52.486. (0.01).^2} \quad n = \frac{52.486}{52.487}$$

n = 99,99 then the researcher completes 100

The data analysis technique used in this study consisted of four stages. First, identify visitor biodata to briefly describe selected informants. The identification method contains the informant's name, age, gender, living in the neighborhood, how often to visit the park, and the purpose of visiting the park. Second, identify the condition of the facilities and infrastructure to support the social interaction space in Banda Aceh City Park, by observing and distributing questionnaires to park visitors. The third stage is to identify the level of comfort of visitors to the city park of Blang Padang Banda Aceh as a space for social interaction, by distributing questionnaires to visitors at the research location. the fourth stage is to identify how the influence of facilities and infrastructure on the comfort level of visitors in supporting the success of the Blang Padang field city park as a space for social interaction, by distributing questionnaires. The research was conducted in order to determine the effect of visitor comfort on the success of the city park as a space for social interaction.

The assessment uses a Likert scale (1-5) starting from very bad / very uncomfortable / very unsuccessful (1), not good / uncomfortable / not successful (2), good / comfortable / successful (3), quite good/ moderately comfortable/ moderately successful (4), very good/ very comfortable/ very successful (5). After that determine the criteria class interval, namely Very not good/Very uncomfortable/very unsuccessful, Not good/Uncomfortable/not successful, Good/comfortable/successful, Fairly good/quite comfortable/fairly successful, Very good/Very comfortable/ very successful.

The data analysis technique used in this study consists of three stages. First, identify the occupants to describe the selected informants briefly. The identification method uses a table containing the informant's name, gender, age, length of stay, number of residents, and occupancy location. Second, identifying residential units to describe the furniture layout in the residential space. The way to remember it is to compare the space plan before and after the furniture layout changes. The comparison is carried out to analyze the forms of spatial adaptation of the inhabitants to the environment in which they live. The last stage is identifying activities in the residential unit space to describe the activities carried out by residents in the residential area. Behavioral analysis is carried out on all members of the informant's family in the residential space. The results of the study of the daily activities of the residents of the Rusunawa Seruwai Belawan in the existing area are displayed in the form of an activity table.

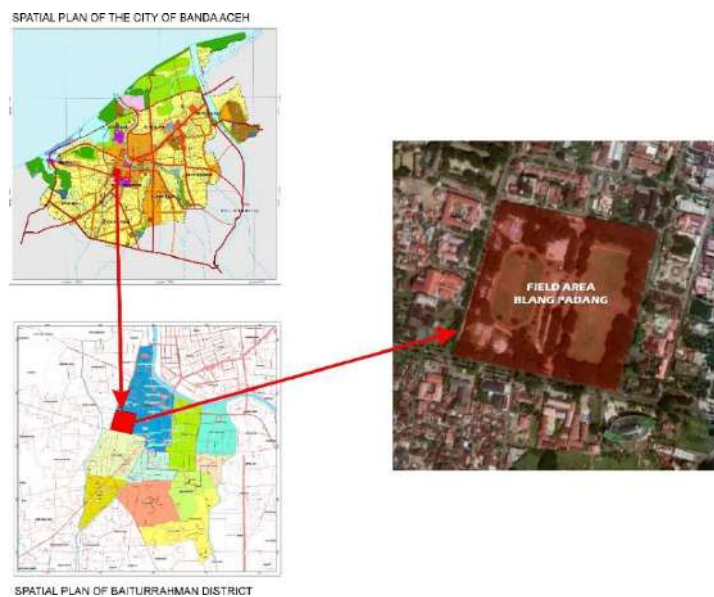
**Tabel 1.** Class Interval Criteria Condition/Convenience/Success

N0	Percentage class interval	criteria
1	$1 \leq x \leq 1,8$	Very not good/Very Uncomfortable/very unsuccessful
2	$1,8 \leq x \leq 2,6$	Not good/Uncomfortable/doesn't work
3	$2,6 \leq x \leq 3,4$	Good/comfortable/success
4	$3,4 \leq x \leq 4,2$	Good enough / comfortable enough / quite successful
5	$4,2 \leq x \leq 5$	Very good/Very comfortable/very successful

Source (Marisa&Yusof, 2020)

#### IV. RESULTS AND DISCUSSION

This research is located at the Blang Padang Field City Park which is located in Baru village, Baiturahman District, Banda Aceh City, Aceh Province. Blang Padang Field City Park is located in the center of Banda Aceh and has become an icon of Banda Aceh City and is also a place for the people of Banda Aceh City to spend their free time and carry out other social activities. The Balang Padang field city park has an area of 95,000 m2 which makes it the largest city park in Banda Aceh City. Blang Padang City Park is located on Jalan Prof. A. Majid Ibrahim II in the North, Soekarno – Hatta Street in the East, Imam Bonjol Street in the West and Sultan Iskandar Muda Street in the South. The research location can be seen in (Figure 1) below.



**Figure 1.**Research location

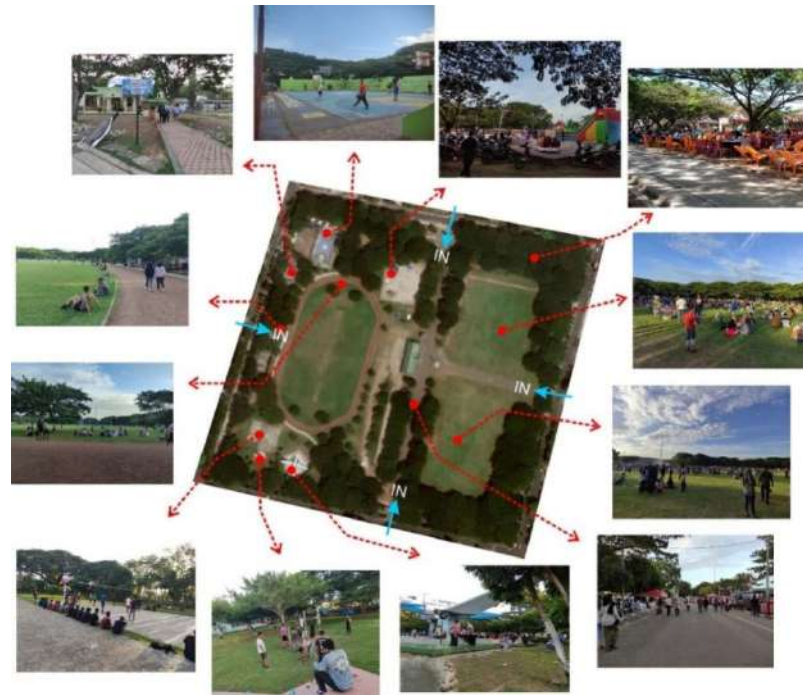
The arrangement and conditions at the Blang Padang Field park in general are quite good, this is motivated by the completeness of the facilities and infrastructure available at the Blang Padang Field in Banda Aceh, besides that it is also supported by the regulations set by the manager of the Blang Padang Field park. Banda Aceh's Blang Padang Field Park is dominated by a stretch of grass and the arrangement of green shade trees that surrounds the park is quite good. The existing conditions in the Blang Padang field can be seen in (Figure 2) below.



**Figure 2.**Existing conditions in the research location

In the picture above, you can see the condition of the Blang Padang field in Banda Aceh, in Figure 1 is the management and security post for the Blang Padang Field in Banda Aceh, then in Figure 2 there is one sports facility and a multi-functional concrete vineyard such as a basketball court, futsal and volleyball, then in Figure 3 is a culinary facility that provides various types of food and drinks, then in Figure 4 it can be seen in the form of a tribune facility, then in Figure 5 is a pedestrian facility to surround the Blang Padang Field, then in Figure 6 there is a monument Selawah plane which is the first aircraft of the Republic of Indonesia which was donated by the people of Aceh, then in Figure 7 there are volleyball court facilities, then in Figure 8 there are tennis court facilities, then in Figure 9 there are soccer field facilities which are surrounded by jogging facilities. track, then in picture number 10 there are religious facilities in the form of a prayer room, then in picture 11 there are basketball and futsal field facilities, and furthermore in picture 12 there are children's play area facilities. Blang Padang Field in Banda Aceh also has 4 main entrances which are divided on four sides of the field.

Blang Padang Field Park Banda Aceh is a park that is a place for the people of Banda Aceh and tourists to carry out various social activities, the location of the park in the city center makes this park a very strategic location for visitors to visit it, various social activities that occur in the city center. This park is like a place to exercise, relax, vacation with family, organize, gather community, eat culinary, and much more. In addition, as a park that functions as a space for social interaction, this park is also complete with various facilities and infrastructure. Various social activities that occur in this park can be seen in (Figure 3) below.



**Figure 3.** Social interaction activities that occur at Blang Padang Field Park, Banda Aceh

In realizing a comfortable city park for the needs of park facilities and infrastructure as a supporter of activities in it, the researchers collected data on visitor satisfaction perceptions about park facilities by distributing questionnaires. There are several questions that are summarized by the researchers which are expected to represent visitors' perceptions of the completeness and condition of the infrastructure facilities in the Blang Padang field park, Banda Aceh. Visitors' perceptions of the completeness and condition of facilities and infrastructure at the Blang Padang field park in Banda Aceh can be seen in table 2.

**Table 2.** Frequency Distribution of Visitors' Perceptions on the Condition of Banda Aceh City Park Facilities and Infrastructure

NO	Statement	Answer										A V E R A G E
		Very Not Good		Not good		good		Pretty good		Very good		
		N	%	N	%	N	%	N	%	N	%	
1	How is the condition and availability of lighting facilities (garden lights)	-	-	5	5.0	49	49.0	43	43.0	3	3.0	3.44
2	What is the condition and availability of cleaning facilities (clean water)	-	-	1	1.0	35	35.0	55	55.0	9	9.0	3.72
3	How are the facilities and infrastructure of parking spaces in city parks available?	-	-	1	1.0	15	15.0	58	58.0	26	26.0	4.09
4	What are the conditions and availability of toilet facilities in the park?	-	-	4	4.0	21	21.0	52	52.0	23	23.0	3.94
5	What is the condition of the facilities and	-	-	4	4.0	21	21.0	52	52.0	23	23.0	3.94

NO	Statement	Answer										A V E R A G E
		Very Not Good		Not good		good		Pretty good		Very good		
		N	%	N	%	N	%	N	%	N	%	
	infrastructure (seats, gazebos, shelters) available in the park?											
6	How is the condition of the facilities and infrastructure for children's play facilities?	-	-	1	1.0	11	11.0	55	55.0	33	33.0	4.2
7	How is the condition of the facilities and infrastructure for walking facilities in the park?	-	-	-	-	13	13.0	43	43.0	44	44.0	4.31
8	What is the condition of the prayer room facilities and infrastructure for worship?	-	-	2	2.0	23	23.0	51	51.0	24	24.0	3.97
9	What is the condition of the facilities and infrastructure of sports facilities available in the park?	-	-	-	-	6	6.0	26	26.0	68	68.0	4.62
10	What is the condition and availability of cleaning facilities (garbage bins)?	-	-	1	1.0	17	17.0	48	48.0	34	34.0	4.15
11	What are the conditions and availability of disability facilities?	1	1.0	6	6.0	42	42.0	28	28.0	23	23.0	3.66
<b>source person</b>		<b>100</b>										<b>4.00</b>

Table 2 shows the visitor's perception of the condition of the facilities and infrastructure to support the social interaction space in Banda Aceh's Blang Padang field park. We obtained a total score with an average of 4.00, so it can be concluded that the visitor's perception of the condition of the facilities and infrastructure to support the social interaction space at the Blang Padang field park in Banda Aceh can be categorized as good enough. This means that in general, respondents admit that the facilities and infrastructure available in this park are good. This is very important to improve facilities and infrastructure that are comfortable for park visitors and can increase the availability of facilities and infrastructure in the park.

Perceptions of the quality of the facilities and infrastructure available at the city park greatly affect all activities of park visitors, especially in terms of visitor convenience to the facilities and infrastructure contained in the Blang Padang Field park in Banda Aceh so as to create a comfortable city park as a space for social interaction. Therefore, to find out how comfortable visitors are with all the facilities and infrastructure contained in this park, the researchers distributed questionnaires directly to city park visitors who were at the research location. The questionnaire consisted of several questions regarding the comfort level of visitors to the park facilities as a supporter of social interaction space at the Blang Padang field park in Banda Aceh. Visitors' perceptions of the convenience of facilities and infrastructure at the Blang Padang field park in Banda Aceh can be seen in table 3.

**Table 3.** Frequency Distribution of Visitors' Perceptions on the Quality of Banda Aceh City Park Facilities and Infrastructure

NO	Statement	Answer										A V E R A G E
		Very uncomfor- table		Uncomfor- table		Comfor- table		Quite comfortable		Very comfortable		
		N	%	N	%	N	%	N	%	N	%	
1	How comfortable is the lighting (garden lamp) ?	-	-	16	16.0	42	42.0	39	39.0	3	3.0	3.29
2	How comfortable is the cleanliness in this garden area?	-	-	2	2.0	14	14.0	71	71.0	13	13.0	3.95
3	How is the convenience of security in activities around the garden area?	-	-	-	-	9	9.0	57	57.0	34	34.0	4.25
4	How comfortable is the children's play facilities when they are used in the garden area?	-	-	2	2.0	6	6.0	59	59.0	33	33.0	4.23
5	How is the convenience of access to the location of the park?	-	-	-	-	4	4.0	47	47.0	49	49.0	4.45
6	How comfortable is it in walking around the garden?	-	-	-	-	6	6.0	49	49.0	45	45.0	4.39
7	How comfortable is it in parking the vehicle?	-	-	-	-	26	26.0	51	51.0	23	23.0	3.97
8	How does the garden feel about the smell / smell?	-	-	1	1.0	27	27.0	50	50.0	22	22.0	3.93
9	How comfortable is the place of worship available?	-	-	-	-	29	29.0	48	48.0	23	23.0	3.94
10	How comfortable is the toilet in this city park	-	-	13	13.0	48	48.0	17	17.0	22	22.0	3.48
11	How comfortable are the sports facilities available?	-	-	-	-	7	7.0	24	24.0	69	69.0	4.62
12	How comfortable is the seat in the city park?	-	-	2	2.0	10	10.0	54	54.0	34	34.0	4.2
13	How comfortable is the shade tree in the city park?	-	-	-	-	2	2.0	32	32.0	66	66.0	4.64
14	How comfortable is the existing pedestrian path?	-	-	-	-	9	9.0	50	50.0	41	41.0	4.32
15	How comfortable is the noise in a city park?	-	-	1	1.0	12	12.0	41	41.0	46	46.0	4.32
<b>source person</b>		<b>100</b>										<b>4.13</b>



Table 3 shows the visitor's perception of the facilities and infrastructure of the social interaction room at Blang Padang Field Park, Banda Aceh. We obtained a total score with an average of 4.13, so that it can be used as a basis for opening social interaction facilities and infrastructure in Blang Padang Park, Banda Aceh, which can be categorized as quite comfortable. This means that in general, respondents admit that the facilities and infrastructure in this park are comfortable. This is very important to improve facilities and infrastructure that are more comfortable for park visitors and can increase the availability of facilities and infrastructure in the park.

Visitor comfort is a very important and very influential aspect for public open spaces such as city parks, visitor comfort is greatly influenced by facilities and infrastructure, where good facilities and infrastructure will create a comfortable area for users, especially in city parks, in order to create a space for social interaction for urban communities, and vice versa if the facilities in a park are not good then the park is not able to create a comfortable social interaction space. Therefore, the researcher summarizes several questions that represent problems regarding the influence of facilities on visitor comfort in supporting the success of the city park as a space for social interaction in the Blang Padang field city park, Banda Aceh, Visitors' perceptions of the influence of facilities and infrastructure on visitor comfort in supporting the success of the city park as a space for social interaction at the Blang Padang field city park in Banda Aceh can be seen in table 4.

**Table 4.** Frequency distribution of the influence of facilities and infrastructure on the comfort level of visitors in supporting the success of the Blang Padang field city park Banda Aceh

NO	Statement	Answer										A V E R A G E
		Very Not Good		Not good		good		Pretty good		Very good		
		N	%	N	%	N	%	N	%	N	%	
1	How is the success of city parks on the facilities and infrastructure available in terms of accessibility?	-	-	-	-	8	8.0	50	50.0	42	42.0	4.34
2	How the success of the city park on the facilities and infrastructure available in terms of park cleanliness?	-	-	1	1.0	8	8.0	32	32.0	59	59.0	4.49
3	How the success of the city park on the facilities and infrastructure available in terms of park security?	-	-	-	-	10	10.0	26	26.0	64	64.0	4.54
4	How is the success of city parks on the facilities and infrastructure available in terms of comfort as a space for park social interaction?	-	-	-	-	9	9.0	22	22.0	69	69.0	4.6
5	How is the success of city parks on the facilities and infrastructure available in terms of circulation?	-	-	1	1.0	4	4.0	32	32.0	63	63.0	4.57

NO	Statement	Answer										A V E R A G E
		Very Not Good		Not good		good		Pretty good		Very good		
		N	%	N	%	N	%	N	%	N	%	
6	How is the success of city parks on the available facilities and infrastructure for disabilities?	1	1.0	3	3.0	31	31.0	30	30.0	35	35.0	3.95
<b>source person</b>		<b>100</b>										4,41

Table 4 shows the influence of facilities and infrastructure on the level of visitors in supporting the success of the Blang Padang City Park as a space for social interaction. We obtained a total score with an average of 4.41 so it can be concluded that the facilities and infrastructure as a space for social interaction in Blang Padang Park, Banda Aceh which can be categorized as very successful and have an effect on the success of this city park. This means that in general, respondents admit that the facilities and infrastructure in this park have an effect on the success of the city park as a space for social interaction and can be categorized as very successful. It is very important to know how important facilities and infrastructure are to visitors' comfort level in supporting the success of the Blang Padang City Park as a space for social interaction\

## V. CONCLUSION

The condition of the facilities and infrastructure to support the social interaction space in the Blang Padang Field Park is overall very good, but from the observations of the researchers there are several facilities and infrastructure that need to be improved such as the limited availability of toilets, children's play facilities that are still lacking, incomplete garden chairs, garden lights are still lacking. and sports facilities that need regular maintenance so that the condition of facilities and infrastructure at Blang Padang Field Park can last a long time so as to provide comfort to visitors so as to support social interaction space. In addition, it is hoped that with the improvement of facilities and infrastructure for persons with disabilities, this park is also able to play a good role for persons with disabilities. Overall, visitors' perception of the condition of facilities and infrastructure in the Blang Padang field park is 4.00% which can be categorized as visitors who feel that the facilities and infrastructure in this park are good enough.

Then the level of comfort of visitors to the city park of Blang Padang Banda Aceh as a space for social interaction, overall visitors are very comfortable with the park where the park is equipped with excellent facilities and infrastructure, but from the observations of researchers there are several facilities and infrastructure that make visitors a little less comfortable such as lighting at night which is still dim, limited availability of toilets that make visitors have to queue, limited children's play facilities which make children have to wait to change play. Overall, the perception of visitors to the comfort of visitors to the Blang Padang field city park in Banda Aceh as a space for social interaction is 4.13% where visitors can be categorized as feeling very comfortable.

Then regarding the influence of facilities and infrastructure on the level of visitor comfort in supporting the success of the Blang Padang field city park as a space for social interaction, facilities and infrastructure greatly affect the comfort of visitors to conduct social interaction, where the availability of facilities and infrastructure makes visitors feel at home in the park and makes visitors have a purpose to visit this park. Visitors can do various social activities such as exercising, playing with children, gathering with friends, enjoying various culinary delights, and so on. On the other hand, if this park does not have facilities and infrastructure, visitors will be reluctant to visit this park. Overall, visitors' perceptions of the success of the Blang Padang field city park in Banda Aceh as a social interaction space were 4.41%, which can be categorized as a very successful park as a social interaction space for visitors.

The purpose of the study was to assess the effect of visitor comfort on the success of the city park as a space for social interaction in the city park of Blang Padang Field, Banda Aceh. Based on the results of the study, several suggestions can be made: given; It is hoped that the results of the research can become an understanding of various problems and increase public awareness about the importance of a city park and can maintain existing facilities and infrastructure so that city parks become a comfortable place for social interaction. Development This research is expected to be a reference for the government, designers, and developers in creating a comfortable city park as a space for social interaction.

## VI. ACKNOWLEDGEMENTS

Thank you very much to all those who have helped both in terms of material and guidance so that this research can be completed on time and is expected to be a source of knowledge

## REFERENCES

- [1] R. Iswara, W. Astuti, R. A. Putri. 2017. Kesesuaian Fungsi Taman Kota Dalam Mendukung Konsep Kota Layak Huni di Surakarta. Program Studi Perencanaan Wilayah dan Kota Fakultas Teknik Universitas Sebelas Maret Surakarta. *Arsitektura*, Vol. 15, No.1, April 2017: 115-123
- [2] N. Imansari, Khadiyanta. Penyediaan Hutan Kota dan Taman Kota sebagai Ruang Terbuka Hijau (RTH) Publik Menurut Preferensi Masyarakat di Kawasan Pusat Kota Tangerang. Universitas Diponegoro, Semarang, Indonesia, ruang volume 1 nomor 3, 2015, 101-110 p-issn 1858-3881; e-issn 2356-0088 <http://ejournal2.undip.ac.id/index.php/ruang>,
- [3] Peraturan Pemerintah SNI 03-1733-2004
- [4] I. Tuahena, T. Martosenjoyo, A. M. Radja. Persepsi Pengunjung Terhadap Kenyamanan Fasilitas Ruang Terbuka Publik Fort Rotterdam. Universitas Hasanuddin Makassar. Volume 6, Nomor 1, 2019, hlm 62-72 p-ISSN: 2302 – 6073, e-ISSN: 2579 – 4800.
- [5] J. Nurdina, I.Izziah , T. B. Auliac 2020. Kualitas Ruang Terbuka Publik Lapangan Blang Padang Kota Banda Aceh Jurnal Arsip Rekayasa Sipil dan Perencanaan 3(2), 108-117. <https://kbbi.web.id/sarana-prasarana> (2022)
- [7] R. F. Jamila, Tingkat Kenyamanan Taman Honda Tebet Sebagai Ruang Interaksi Sosial. Universitas Mercu Buana. *Jurnal Arsitektur, Bangunan, & Lingkungan* | Vol.8 No.3 Juli 2019: 163-168
- [8] Peraturan Menteri pekerjaan umum Nomor: 05/PRT/M/2008 tentang pedoman Penyediaan dan Pemanfaatan ruang terbuka hijau di kawasan perkotaan
- [9] G. A. Widyarini a, . I N. Sunartaa. Dampak Pengembangan Sarana Pariwisata Terhadap Peningkatan Jumlah Pengunjung Di Wisata Alam Air Panas Angseri, Tabanan. Program Studi S1 Destinasi Pariwisata, Fakultas Pariwisata, Universitas Udayana, Vol. 6 No 2. 2018 p-ISSN: 2338-8811, e-ISSN: 2548-8937
- [10] Lee, Y. C., dan kim, K, H. 2015. Attitudes of citizens towards urban parks and green spaces for urban sustainability: the case of gyeongsan city, republic of korea, *journal sustainability*. Gyeongsan city
- [11] Dendy, Sugono, (2008). Kamus Besar Bahasa Indonesia Edisi Keempat . Jakarta : Gramedia
- [12] Horton, Paul B. dan Chester L. Hunt. 1984. *Sociology*. Edisi keenam. International Student Edition. Tokyo: Mc.Graw-Hill Book Company Inc
- [13] H. Alwi, M. Ali, Persepsi Pengunjung terhadap Ketersediaan Sarana Penunjang Ruang Publik Kota Mara Program Studi Pengembangan Wilayah dan Kota, Jurusan Arsitektur, Fakultas Teknik, Universitas Hasanuddin *Jurnal Wilayah dan Kota Maritim* Vol. 2 No. 1, Mei 2014, hal.79-86
- [14] Gramedia ogarsiwayan, Anggraini, Lestari, Pengaruh Kualitas Ruang dan Persepsi Pengunjung, *Jurusan Arsitektur, Universitas Islam Indonesia* Volume 5 - Nomor 2 – Juni 2022
- [15] Hakim, Rustam, HUtomoo. 2003. *Komponen Perancangan Arsitektur Lansekap Prinsip-Prinsip dan Aplikasi Disain*. Jakarta: Bumi Aksara
- [16] E. Adhitya Hari Putra. P.Khadiyanto. Pengaruh Privatisasi Ruang Terbuka Publik Taman Tabanas Gombel Semarang Terhadap Tingkat Kenyamanan Pengunjung. *Teknik PWK; Jurusan Perencanaan Wilayah dan Kota, Fakultas Teknik, Universitas Diponegoro* Vol. 3; No. 3 2014; hal. 446-460
- [17] Waluyo, et al. 2008. *Ilmu Pengetahuan Sosial*. Jakarta: Pusat Perbukuan, Departemen Pendidikan Nasional
- [18] A. R. Putri; E. Yuliani; B. Rahman. Pembentukan Ruang Aktivitas Sosial Pada Ruang Terbuka Publik Taman Menteri Supeno. Program Studi Perencanaan Wilayah dan Kota Universitas Islam Sultan Agung Semarang. *Jurnal Planologi* Vol. 14, No. 2, Oktober 2017
- [19] Carr, Stephen et al. 1992. *Public Space*. United States of America: Cambridge University Press
- [20] Arikunto, suharsimi. 2010. *Prosuder penelitian suatu pendekatan praktik*. Jakarta. Rineka cipta